

# Microtek Medi-3200 Mammography Film Digitiser

Professional mammography film digitizer with auto-crop multi-films feature to save time & money

Introduced by Microtek, the professional design of Medi-3200 can easily transfer mammography films into digital format. Simply using customized templates and the Smart-Scan feature together, the Medi-3200 can easily carry out the auto-crop function to scan multi-films at a time. In addition, it captures details in bright and dark areas at a high optical resolution up to 3200 dpi, 4.2 Dmax, and 16-bit grayscale.

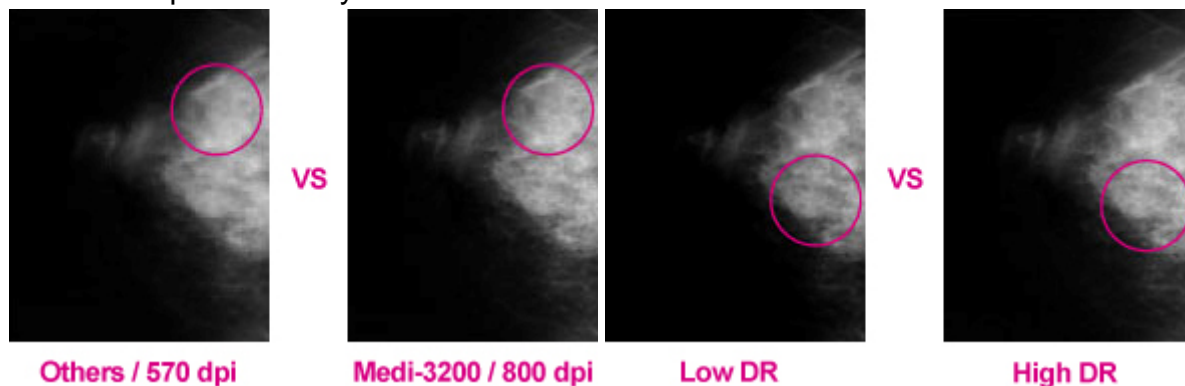
Therefore, it provides medical professionals a smart and easy way to digitize and observe mammography films.

- The most economical mammography film digitizer
- One-pass-scan to auto-crop multiple films at a time
- Provides high optical resolution up to 3200 dpi for better image detail
- Offers dynamic range up to 4.2 Dmax
- Covers various sizes of film up to 12" x 16"

## Features

Superior scans with 3200 dpi resolution and 4.2 Dmax

The Medi-3200 delivers impressive image quality, versatility and productivity features with the default 800 dpi, up to 3200 dpi optical resolution, 16-bit grayscale, 4.2 maximum optical density.



The higher resolution of Medi-3200 provides better image details.

Medi-3200 provides 4.2 Dmax for a better performance in grayscale.

Variety of Film Templates



Medi-3200 with two kinds of special designed templates that allows medical professionals to scan multi-films at the same time.

Frame Sizes for films: 24cm x 30cm ; 18cm x 24cm

## Scan Multiple Films at the Same Time

Templates and Smart-Scan make auto-crop simple to scan multi-films at a time.



## Technical Specifications

<b>Type</b>	Flatbed Scanner
<b>Scanning Area</b>	Up to 12" x 16"
<b>Scanning Mode</b>	8, 12, 16-bit grayscale
<b>Optical Resolution</b>	Default 600dpi, up to 3200 dpi
<b>Dynamic Range</b>	4.2 Dmax
<b>Interface</b>	Hi-Speed USB (USB 2.0), FireWire
<b>Dimensions (L x W x H)</b>	627.6 x 367.2 x 180.5mm
<b>Net Weight</b>	16.1kg
<b>Power Supply</b>	100 to 240 VAC, 47 to 63Hz
<b>Max Power Consumption</b>	45 Watts
<b>System requirements and compatibles</b>	CD-ROM drive 2GB RAM or more Pentium IV or higher With Hi-Speed USB (USB 2.0) port Microsoft Windows 2000, XP, or Vista
<b>Environment</b>	Operating Temperature - 10°C to 40°C / 50°F to 104°F Relative Humidity - 20% to 85%
<b>Certificates</b>	FCC, CE, RoHS, ISO 13485 : 2003, SFDA certified